

# DuraChem®

Multi-Hazard Protection

DuraChem® 200

## DuraChem® 200 Is A Proven, Multi-Hazard Hi-Vis Workhorse.

- DuraChem® 200 is the first and only breathable garment certified to or compliant with six key industry safety standards.
- Launderable Hi-Vis FR protection, plus Chemical, Thermal, Arc Flash, Steam and Hot Water, and Molten Metal Splash protection.
- Breathability reduces heat stress and improves worker comfort.
- 24/7 facility-wide protection for day or night work applications.
- Multi-Hazard garment with flexible hood options simplifies PPE selection and inventory.
- Convenient design features enhance performance (*zipper pull-tab shown at right*).



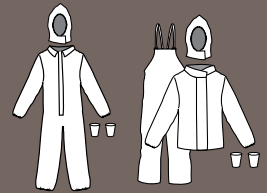
# Multi-Hazard FR And High-Visibility Protection For Day or Night.

DuraChem 200 is Multi-Hazard High-Visibility apparel that combines FR protection with protection against Chemical, Arc Flash, Steam and Hot Water, and Molten Metal Splash hazards in one cost-effective coverall or ensemble. Breathable and launderable, DuraChem 200 offers facility-wide protection for a wide range of work applications for daytime or nighttime work. Certified to or compliant with six key industry safety standards, DuraChem 200 helps simplify PPE selection and inventory with a flexible, proven Multi-Hazard apparel solution.

- Flame Resistant – NFPA 2112 & ASTM F2733
- Chemical – NFPA 1992
- Hi-Vis – ANSI 107 Type P, Class 3, plus compliant with OSHA Roadside Emergency Response requirements
- Arc Flash – NFPA 70E & ASTM F1891
- Molten Metal Splash – ASTM F955
- Tested Against Steam and Hot Water – University of Alberta

For detailed test results and technical data visit [kappler.com/durachem200](http://kappler.com/durachem200).

DuraChem®200



Shown above are typical garment types for this fabric. View available styles and details at [kappler.com](http://kappler.com)



Attachable hood on jacket with secure hook-and-loop closure.



Even our labels work harder. ChemScan® QR code labels provide quick access to the fabric's chemical test data and other product details.

Attached loop keeps respirator airline out of way and secure.



**WARNING:** This information is based on technical data that Kappler believes to be reliable. It is subject to revision as additional knowledge and experience are gained. The website will contain Kappler's most up-to-date product information, and customers who receive pamphlets, brochures or other literature should be aware that such "hard copy" information may not be as current as the information on Kappler's website. Customers also should recognize that there are uses, environments and chemicals for which Kappler products, garments and/or fabrics are unsuitable. It is the responsibility of the user to review available data and verify that the product, garment and/or fabric is appropriate for the intended use and meets all specified government and/or industry standards. Also, the customer should review all available information on the website to understand the uses – and limitations – on ALL products, garments and fabrics which Kappler makes available.

**CAUTION:** Do not use for fire protection. Avoid open flame or intense heat.

Excellent ANSI 107 visibility and reflectivity performance.



Adjustment straps at ankles and wrists for custom fit.

MM-0043 / 18KAP134 / NOV18 / WO